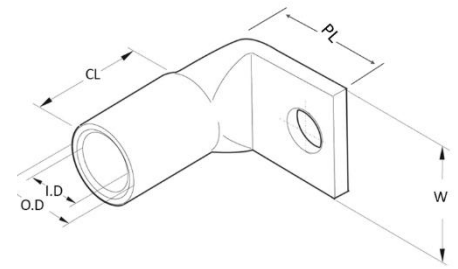


90 DEGREE CABLE LUG

Use for Copper Conductor.
Crimp Type for Hexagon and Indent Die.

High Conductivity Copper : 99% I.A.C.S
Copper Purity : 99.9%
Finishing : Tin Plated



Copper Tube compliant to MS1540.

Size (mm ²)	Stud hole	Item Description	PL	CL	OD	ID	W	Crimping Tool	Hexagon Die A/F	No. Of Crimps
16	M8	16MM ² (M8) 90 DEGREE	24	13	7.8	5.6	12.0	TCCP-300	6.4	1
25	M8	25MM ² (M8) 90 DEGREE	25	20	9.3	7.0	13.5	TCCP-300	7.7	1
35	M10	35MM ² (M10) 90 DEGREE	29	21	10.8	8.4	16.0	TCCP-300	8.9	1
50	M10	50MM ² (M10) 90 DEGREE	31	22	12.5	9.5	18.0	TCCP-300	10.3	1
70	M12	70MM ² (M12) 90 DEGREE	35	25	14.4	11.2	20.5	TCCP-300	11.9	1
95	M12	95MM ² (M12) 90 DEGREE	36	25	17.5	13.5	25.0	TCCP-300	14.5	1
120	M12	120MM ² (M12) 90 DEGREE	40	27	19.0	14.6	28.0	TCCP-300	15.7	2
150	M16	150MM ² (M16) 90 DEGREE	44	30	21.4	16.4	31.5	TCCP-300	17.6	2
185	M16	185MM ² (M16) 90 DEGREE	47	32	23.7	18.5	35.0	TCCP-300/630	19.5	2/ 1
240	M16	240MM ² (M16) 90 DEGREE	60	50	27.4	21.0	40.0	TCCP-300/630	22.6	3/ 2
300	M16	300MM ² (M16) 90 DEGREE	63	50	30.5	23.5	45.0	TCCP-630	25.2	2
400	M16	400MM ² (M16) 90 DEGREE	65	60	34.0	26.2	50.0	TCCP-630	28.5	2
500	M20	500MM ² (M20) 90 DEGREE	83	65	38.6	30.0	55.0	TCCP-630	32.1	3
630	M20	630MM ² (M20) 90 DEGREE	85	65	44.7	34.5	64.0	TCCP-630	37.0	3

Notes:

1. All dimensions are in mm.
2. Other dimension customizations are available upon request.
3. Please consult with our sales personnel before order.

