

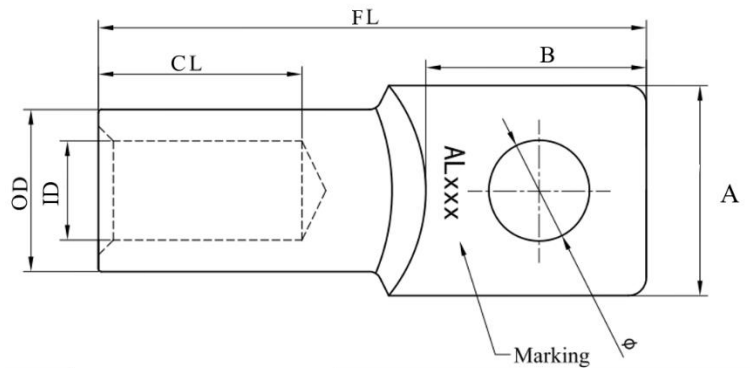
SOLID TYPE ALUMINIUM CABLE LUG

Made from Solid Aluminium Rod.

All lugs are pre-filled with jointing compound, plugged and individually labeled.

Suitable for crimp type for Hexagon and Indent Die.

Aluminium Purity: AL 99.5%



Size (mm ²)	Item Code	Dimension						Stud Hole
		FL	CL	OD	ID	A	B	
70	ALIM-70-10	66	25	16.0	11.0	33	26	M10
70	ALIM-70-12	66	25	16.0	11.0	33	26	M12
70	ALIM-70-16	66	25	16.0	11.0	33	26	M16
120	ALIM-120-12	80	32	21.5	15.0	30	30	M12
150	ALIM-150-16	90	33	27.0	16.5	35	35	M16
800	ALST-800	260	125	60.0	36.0	80	80	Blank
1000	ALST-1000	260	124	60.0	43.0	80	80	Blank

Notes:

1. All dimensions are in mm.
2. Other dimension customizations are available upon request.

