

MCCB CABLE LUGS

Suitable for all types of MCCB end termination.

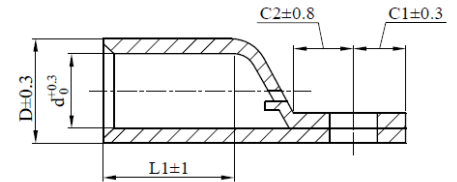
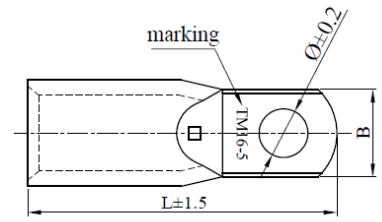
Narrow palm to fit tight spaces.

Crimp Type for Hexagon Dies

High Conductivity Copper : 99% I.A.C.S

Copper Purity : 99.9%

Finishing : Tin Plated



Size (mm ²)	Stud hole	Item code	D	d	B	L	L1	C1	C2	Hexagon Die A/F
10	M5	CLMC-10-5	6.3	4.3	9.0	27.0	10.0	6.0	6.0	Indent
16	M5	CLMC-16-5	7.8	5.6	9.0	31.0	12.0	6.0	6.0	6.4
25	M5	CLMC-25-5	9.3	7.0	9.0	35.0	14.0	6.0	6.0	7.7
35	M6	CLMC-35-6	10.8	8.4	11.5	40.5	16.0	7.0	8.0	8.9
50	M8	CLMC-50-8	12.5	9.5	12.8	45.5	18.0	8.0	9.0	10.3
70	M8	CLMC-70-8	14.8	11.2	15.8	50.0	19.0	9.0	9.0	11.9
95	M8	CLMC-95-8	17.9	13.5	17.8	55.0	22.0	9.0	9.0	14.4
120	M8	CLMC-120-8	20.0	15.6	19.0	68.0	28.0	9.0	14.0	16.5
150	M8	CLMC-150-8	21.8	16.7	24.0	75.0	30.0	9.0	18.0	18.0
185	M10	CLMC-185-10	24.2	19.0	24.5	79.0	32.0	9.5	18.0	20.0

Notes:

1. All dimensions are in mm.

