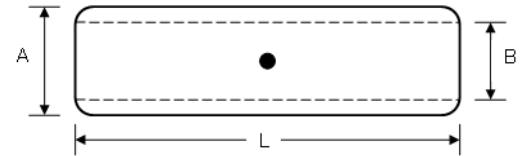


# ALUMINIUM JOINTING FERRULE

Made from Aluminium tube for jointing same size of Aluminium circular conductors.  
 All Ferrules are pre-filled with jointing compound, plugged and individually labeled.  
 Suitable for crimp type for Hexagon and Indent Die.

Aluminium Purity: AL 99.5%



Size (mm <sup>2</sup> )	Item code	Dimensions (mm)			CONWAY Tools & Accessories			
		B	A	L	Head Type	Containing Die Type	Indenter Type	Hexagon Die A/F
16	AFST-16	5.5	16	90.5	TCCH-240	LA25	P25	13.2
25	AFST-25	6.5	16	90.5	TCCH-240	LA25	P25	13.2
35	AFST-35	8.0	16	90.5	TCCH-240	LA25	P25	13.2
50	AFST-50	9.0	20	106.5	TCCH-240	LA95	P95	16.5
70	AFST-70	11.0	20	106.5	TCCH-240	LA95	P95	16.5
95	AFST-95	12.5	20	106.5	TCCH-240	LA95	P95	16.5
120	AFST-120	13.7	25	133.0	TCCH-240	LA150	P150	20.6
150	AFST-150	15.5	25	133.0	TCCH-240	LA150	P150	20.6
185	AFST-185	17.0	32	143.5	TCCH-240	LA240	P240	26.4
240	AFST-240	19.5	32	143.5	TCCH-240	LA240	P240	26.4
300	AFST-300	23.3	40	218.0	TCCH-630	LA300	P500	33.0
400	AFST-400	26.0	40	218.0	TCCH-630	LA300	P500	33.0
500	AFST-500	29.1	47	218.5	TCCH-630	LA500	P500	38.8
630	AFST-630	32.5	47	218.5	TCCH-630	LA500	P500	38.8
800	AFST-800	39.0	60	300.0	TCCP-1000	-	-	49.5
1000	AFST-1000	43.0	60	300.0	TCCP-1000	-	-	49.5

Notes:

1. All dimensions are in mm.
2. All dimensions are based on TNB Malaysia's requirements and approval.  
(Product Certification Acceptance obtained from TNB Research)
3. Other dimension customizations are available upon request.

