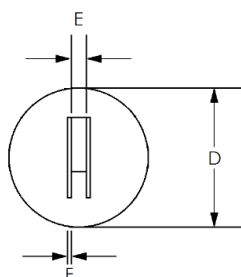
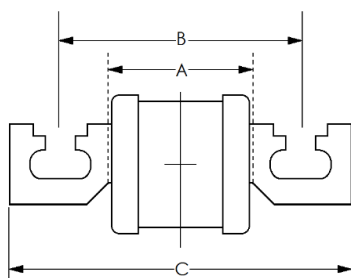


# FUSEGEAR ELECTRIC 'J' TYPE FUSE LINK – U TAG

(B.S. 88: Part 5: 1988, IEC 269)  
500V AC 120kA KEMA TESTED



Type Ref	Current Rating (A)	Breaking Capacity	Dimension					
			C (mm)	B (mm)	A (mm)	D (mm)	E (mm)	F (mm)
FMJ	40A, 60A, 100A, 125A, 160A	120kA at 550V	111.5	82.5	46.0	36.0	6.5	2.4
FMJ	200A, 250A	120kA at 550V	111.5	82.5	46.0	39.0	6.5	2.4
FNJ	315A & 400A	120kA at 550V	111.5	82.5	46.0	54.3	6.5	2.4

Notes:

1. All dimensions are in mm.
2. For fixing centre at 82.5mm



**CONWAY**  
Connecting Power

Tel : +6 03 5569 0600  
H/P : +6 012 506 1068

Email : ask@conway.com.my  
Web : www.conway.com.my