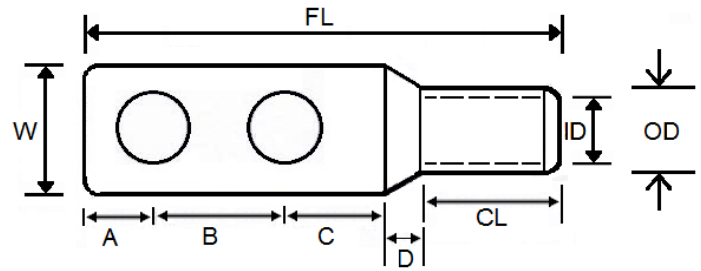


TWO-HOLE CABLE LUG

Use for Copper Conductor.
 Corona relief taper end for application up to 33 kV.
 Crimp Type for Hexagon and Indent Dies.

High Conductivity Copper : 99% I.A.C.S
 Copper Purity : 99.9%
 Finishing : Tin Plated

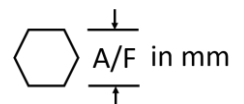


Copper Tube compliant to MS1540.

Size	Stud Hole	Item Code	A	B	C	D	W	OD	ID	FL	CL	Hexagon Die A/F
16mm ²	M8	CLTH-16-8	10	45	12	-	12.0	7.8	5.6	88	13	6.4
25mm ²	M8	CLTH-25-8	10	45	12	-	13.5	9.3	7.0	98	20	7.7
35mm ²	M10	CLTH-35-10	12	45	14	-	16.0	10.8	8.4	103	21	8.9
50mm ²	M10	CLTH-50-10	12	45	14	-	18.0	12.5	9.5	105	22	10.3
70mm ²	M12	CLTH-70-12	14	45	16	14	20.5	14.4	11.2	114	25	11.9
95mm ²	M12	CLTH-95-12	16	45	18	14	25.0	17.5	13.5	118	25	14.5
120mm ²	M12	CLTH-120-12	16	45	18	15	28.0	19.0	14.6	122	28	15.7
150mm ²	M16	CLTH-150-16	16	45	18	15	31.5	21.4	16.4	124	30	17.6
185mm ²	M16	CLTH-185-16	16	45	18	22	35.0	23.7	18.5	133	32	19.5
240mm ²	M16	CLTH-240-16	16	45	18	25	40.0	27.4	21.0	154	50	22.6
300mm ²	M16	CLTH-300-16	16	45	18	28	45.0	30.5	23.5	157	50	25.2
400mm ²	M16	CLTH-400-16	19	45	22	30	50.0	34.0	26.2	176	60	28.5
500mm ²	M20	CLTH-500-20	19	45	22	30	55.0	38.6	30.0	181	65	32.1
630mm ²	M20	CLTH-630-20	19	45	22	35	64.0	44.7	34.5	186	65	37.0

Notes:

1. All dimensions are in mm.
2. Other dimension customizations are available upon request.
3. Please consult with our sales personnel before order.



CONWAY
 Connecting Power

Tel : +6 03 5569 0600
 H/P : +6 012 506 1068

Email : ask@conway.com.my
 Web : www.conway.com.my