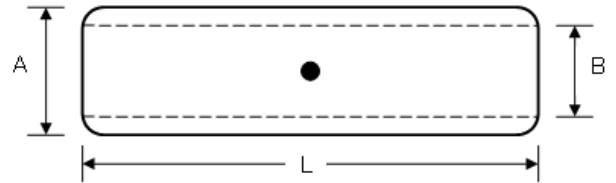


ALUMINIUM JOINTING FERRULE

Made from Aluminium tube for jointing same size Aluminium circular conductors.
All Ferrules are pre-filled with jointing compound, plugged and individually labeled.
Suitable for crimp type for Hexagon and Indent Die.

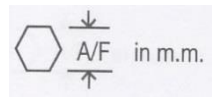
Aluminium Purity: AL 99.5%



Size	Item code	Dimensions (mm)			CONWAY Tools & Accessories			
		B	A	L	Head Type	Containing Die Type	Indentor Type	Hexagon Die A/F
16	AFST-16	5.5	16	90.5	TCCH-240	LA25	P25	13.2
25	AFST-25	6.5	16	90.5	TCCH-240	LA25	P25	13.2
35	AFST-35	8.0	16	90.5	TCCH-240	LA25	P25	13.2
50	AFST-50	9.0	20	106.5	TCCH-240	LA95	P95	16.5
70	AFST-70	11.0	20	106.5	TCCH-240	LA95	P95	16.5
95	AFST-95	12.5	20	106.5	TCCH-240	LA95	P95	16.5
120	AFST-120	13.7	25	133.0	TCCH-240	LA150	P150	20.6
150	AFST-150	15.5	25	133.0	TCCH-240	LA150	P150	20.6
185	AFST-185	17.0	32	143.5	TCCH-240	LA240	P240	26.4
240	AFST-240	19.5	32	143.5	TCCH-240	LA240	P240	26.4
300	AFST-300	23.3	40	218.0	TCCH-630	LA300	P500	33.0
400	AFST-400	26.0	40	218.0	TCCH-630	LA300	P500	33.0
500	AFST-500	29.1	47	218.5	TCCH-630	LA500	P500	38.8
630	AFST-630	32.5	47	218.5	TCCH-630	LA500	P500	38.8
800	AFST-800	39.0	60	300.0	TCCP-1000	-	-	49.5
1000	AFST-1000	43.0	60	300.0	TCCP-1000	-	-	49.5

Notes:

- All dimensions are in mm.
- All dimensions are based on TNB Malaysia's requirements and approval.
(Product Certification Acceptance obtained from TNB Research)
- Other dimension customizations are available on request.



CONWAY
Connecting Power

Tel : +6 03 5122 1223
Fax : +6 03 5121 1109

Email : ctm@conway.com.my
Web : www.conway.com.my