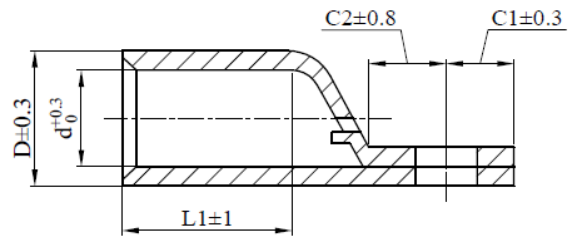
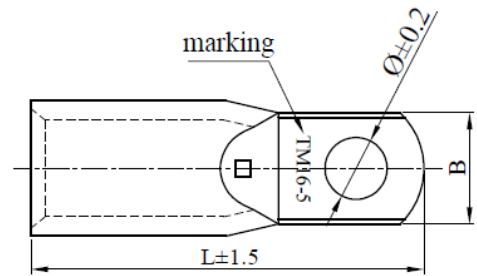


MCCB CABLE LUG

Suitable for all types of MCCB end termination.
Specially designed narrow palm to fit tight spaces.
Crimp Type for Hexagon Dies.

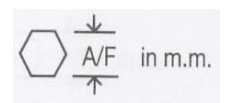
High Conductivity Copper : 99% I.A.C.S
Copper Purity : 99.9%
Finishing : Tin Plated



Size	Stud Hole	Item Code	D	d	B	L	L1	C2	C1
10mm ²	M5	CLMC-10-5	6.3	4.3	9.0	27.0	10.0	6.5	6.0
16mm ²	M5	CLMC-16-5	7.8	5.6	9.0	31.0	12.0	6.5	6.0
25mm ²	M5	CLMC-25-5	9.3	7.0	9.0	35.0	14.0	6.5	6.0
35mm ²	M6	CLMC-35-6	10.8	8.4	11.5	40.5	16.0	8.0	7.0
50mm ²	M8	CLMC-50-8	12.5	9.5	12.8	45.5	18.0	9.0	8.0
70mm ²	M8	CLMC-70-8	14.8	11.2	15.8	50.0	19.0	9.0	9.0
95mm ²	M8	CLMC-95-8	17.9	13.5	17.8	55.0	22.0	9.0	9.0
120mm ²	M8	CLMC-120-8	20.0	15.6	19.0	68.0	28.0	14.0	9.0
150mm ²	M8	CLMC-150-8	21.8	16.7	24.0	75.0	30.0	18.0	9.0
185mm ²	M10	CLMC-185-10	24.2	19.0	24.5	79.0	32.0	18.0	9.5

Notes:

1. All dimensions are in mm.



CONWAY
Connecting Power

Tel : +6 03 5122 1223
Fax : +6 03 5121 1109

Email : ctm@conway.com.my
Web : www.conway.com.my